

K171 Series



APPLICATIONS

Used for the protection of light electronic and mechanical equipment in aircraft, fighting vehicles, trains etc.

DESCRIPTION

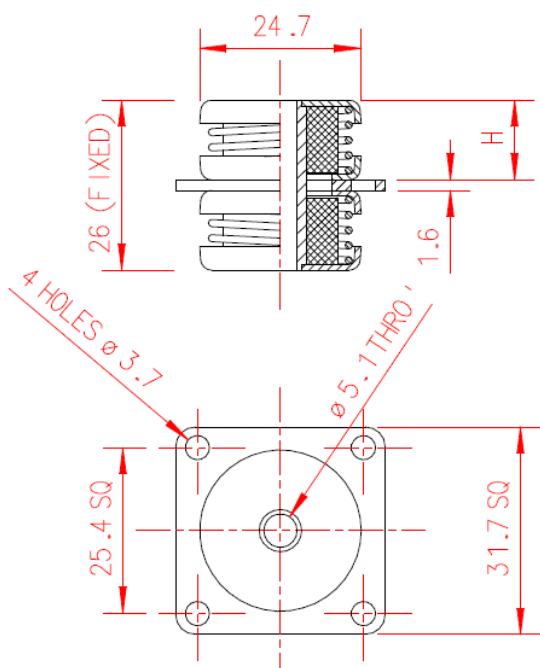
The mounting consists of stainless steel springs, centre tube and resilient knitted stainless steel pads. The mounting plate and retaining caps are made from anodised aluminium alloy. Weight approximately 22 g, depending upon model number

DYNAMIC CHARACTERISTICS

Natural Frequency = 15 to 25 Hz vertical
 = 12 to 20 Hz transverse (radial)
 Transmissibility = 4:1

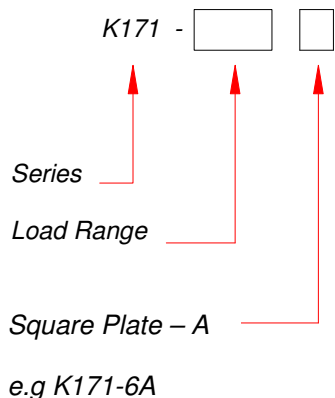
LOADING LIMITATIONS

Mechanical resistance is equal to continuous acceleration of 10 g.
 There is no alteration in characteristics between -70°C and +175°C



Part No.	Load Range, kg
K171-6	0.11 – 0.25
K171-3	0.20 – 0.40
K171-18	0.35 – 0.75
K171-14	1.00 – 1.55
K171-15	1.20 – 2.00

Height, H	Loaded
Compression	9
Tension	15



Note: Historically, the K171 was available with an oval base, e.g. part number K171-6B. This option is no longer available.

Typical Transmissibility Performance Curve as a function of applied load

