

1202 Series



APPLICATIONS

Used for vibration isolation of equipment on fighting vehicles. This multi axial mounting is designed with abutting snubbers. Its dynamic characteristics are identical in both axial (compression) and radial directions. Applied in aerospace, marine, military and industrial roles.

DESCRIPTION

The mounting consists of stainless steel springs and resilient knitted stainless steel pads. The housing, mounting cap and base are made from anodised aluminium alloy. Securing is through tin plated brass eyelets. Weight approximately 115 grams.

DYNAMIC CHARACTERISTICS

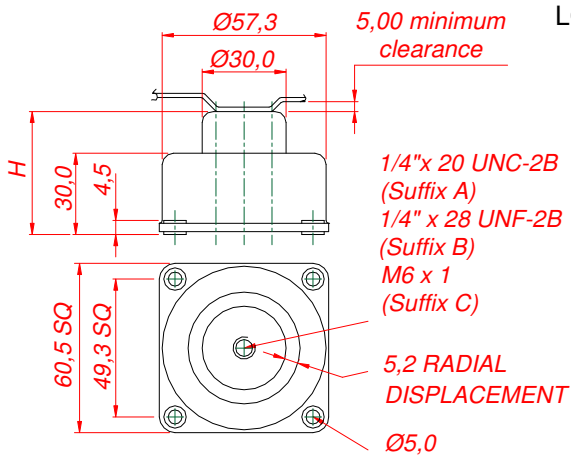
Natural Frequency = 15 to 30 Hz vertical
 Limit loading to 6.8 kg for vehicle and transit case applications.
 Maximum displacement input +/-0.5mm.

Transmissibility = <4:1

LOADING LIMITATIONS

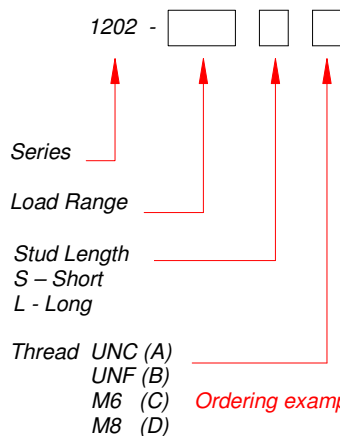
Part No. 1202-10 is recommended for use on stationary applications only. Loads corresponding to at least 10 g may be accepted without subsequently affecting the mount performance.

Maximum displacement of the suspended unit under limiting loads:
 Vertical +/- 5.5mm Radial +/- 3.5mm
 No alteration in characteristics between -70°C and 175°C.



Height, H	Short Stud	Long Stud
Free	34.5	49.2
Loaded	33.3	38

Part No.	Load Range, kg
1202-6	1.15 – 2.70
1202-7	2.50 – 5.70
1202-8	4.55 – 9.10
1202-9	8.15 – 18.15
1202-10	20.4 – 34.0



Ordering example:
1202-9CS Load range 8.15 – 18.15 kg
 Thread type 'C' i.e. M6
 Stud length 'S' i.e. short

Typical Transmissibility Performance Curve as a function of applied load

