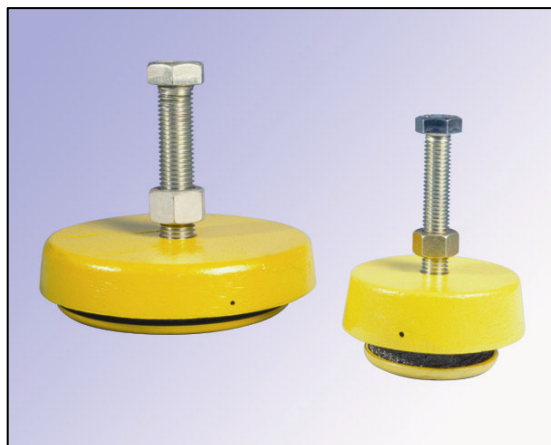


W139, W339 Series

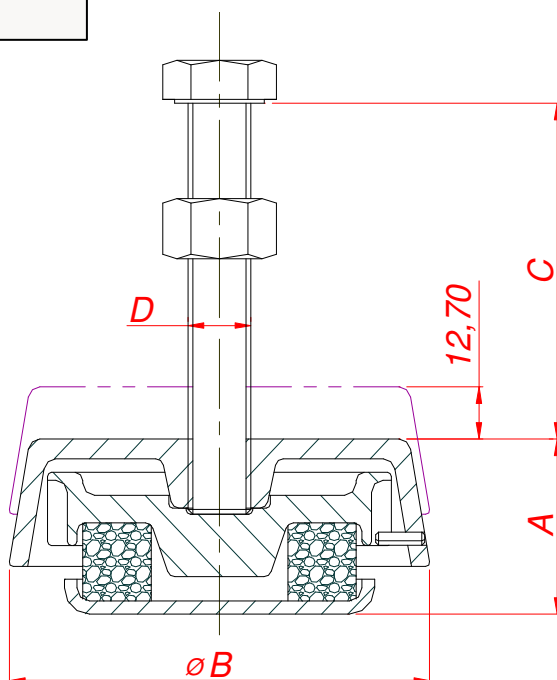


DESCRIPTION

The mountings consist of two robust iron castings, a resilient pad of knitted stainless steel mesh and pressed steel base plate. The levelling screw seats into the bottom casting thus providing a built-in levelling device. The characteristics of this mounting are unaffected by contaminants such as oil, grease or caustics.

INSTALLATION

Raise the machine with conventional lifting devices, place the mountings beneath the machine feet and attach the levelling screws to the mounting. Lower the machine and ensure that the total weight is carried by all of the mountings. Level to a desired height by gradual and sequential adjustment of the levelling screws. Tighten the locknut.



Part Number	Load range kg	Load range lb	A	B	C	D
W139-1	45 - 114	100 - 250	51	108	89	5/8" UNC
W139-2	114 - 227	250 - 500	51	108	89	5/8" UNC
W139-3	227 - 454	500 - 1000	51	108	89	5/8" UNC
W139-4	454 - 909	1000 - 2000	51	108	89	5/8" UNC
W139-5	909 - 1818	2000 - 4000	51	108	89	5/8" UNC
W339-1	454 - 1818	1000 - 4000	54	196	109	1" UNC
W339-3	1818 - 3182	4000 - 7000	54	196	109	1" UNC
W339-5	3182 - 4545	7000 - 10000	54	196	109	1" UNC

CAPARO
DYNAMICS

VIBRATION SHOCK AND NOISE CONTROL



A Division of
CAPARO
ENGINEERING
Limited

