

Machine Mount Series



APPLICATION

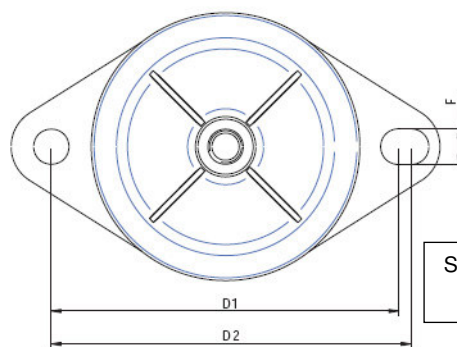
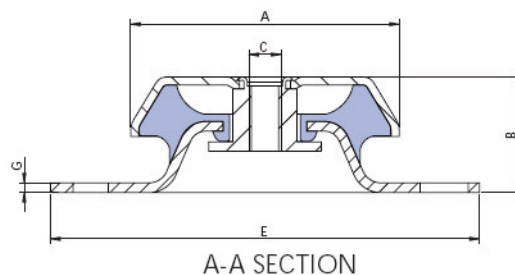
A general purpose vibration isolation mount suitable for fixed and mobile applications which are exposed to axial and radial shocks, oil, diesel, and the weather

DESCRIPTION

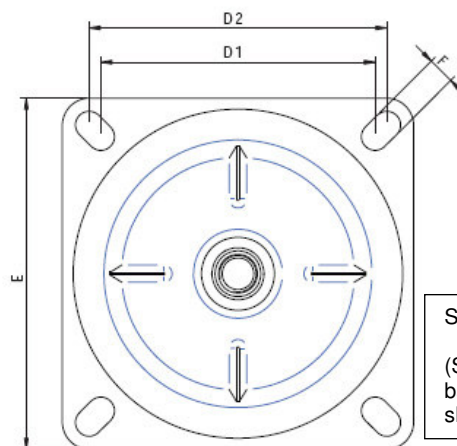
The machinery mount series consist of a rubber element bonded between a steel pedestal and steel cap. The cap provides protection for the rubber element from diesel, oil, ozone, UV rays etc which are damaging to rubber.

The mounts incorporate a fail-safe feature allowing the mount to remain captive should the rubber element break under shock.

Size No.	Dimensions							
	A	B	C	D1	D2	E	F	G
1	64	35	M10	76	91	110	9	2.5
2	65	35	M12	100	100	120	11	3
3	83	35	M10	108	110	130	9	3
3A	83	35	M12	108	110	130	9	3
4	106	41	M12	136	150	170	12.5	3.5
4A	106	41	M16	136	150	170	12.5	3.5
5	155	53.5	M16	176	188	218	14.5	4
5SQ	155	53.5	M16	125	132	164	14.5	4
6	183	86	M20	146	-	180	14.5	5
7	225	105	M24	180	-	220	18.5	6
8	64	35	M10	76	91	110	2.5	9
9	79	30	M10	108	110	130	3	3
9A	79	30	M12	108	110	130	3	3
10	95	35	M10	122	124	150	3	10
10A	95	35	M12	122	124	150	3	10
11	106	37	M12	136	150	170	3.5	12.5
11A	106	37	M16	136	150	170	3.5	12.5
12	124	43	M16	154	162	192	3.5	14
13	155	49	M16	176	188	218	4	14.5
13SQ	155	49	M16	125	132	164	4	14.5
14	162	59	M20	140	140	170	4	14.5
15	180	66	M20	149	163	192	4	14.5
16	225	105	M24	180	180	220	6	18.5



Sizes 1 – 5
8 – 13



Sizes 5SQ, 6, 7,
13SQ, 14 – 16.
(Size 6, 7, 14, 16 have
base holes instead of
slots)

CAPARO
DYNAMICS
VIBRATION SHOCK AND NOISE CONTROL



INVESTOR IN PEOPLE

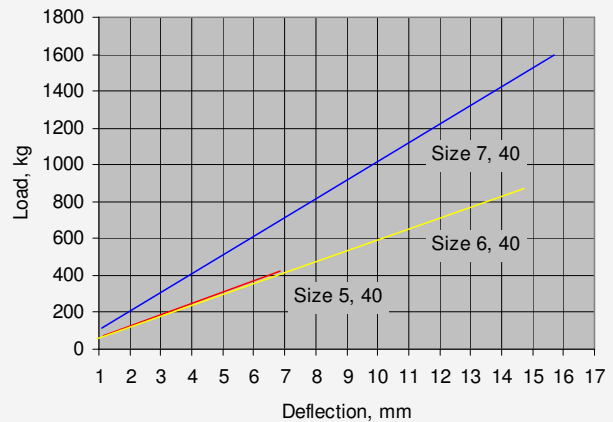
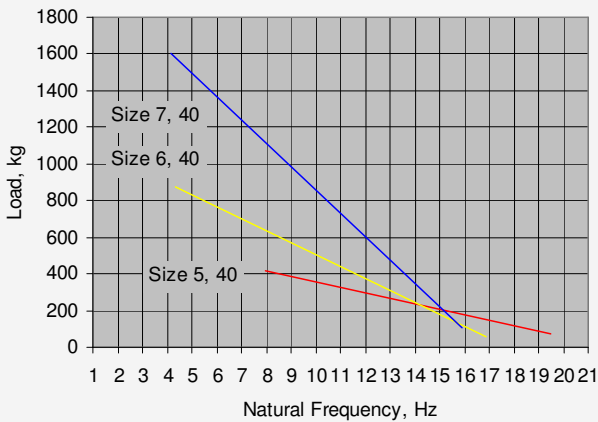
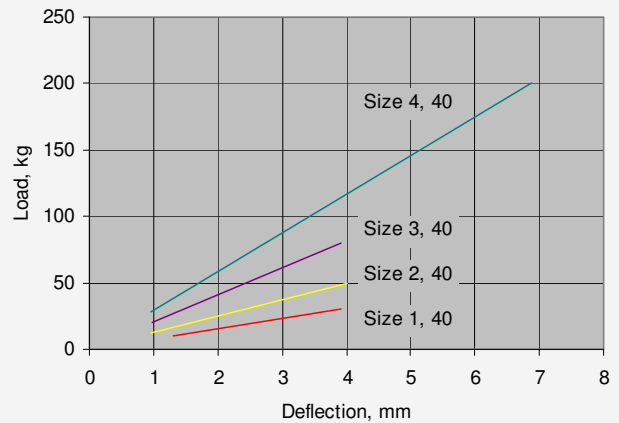
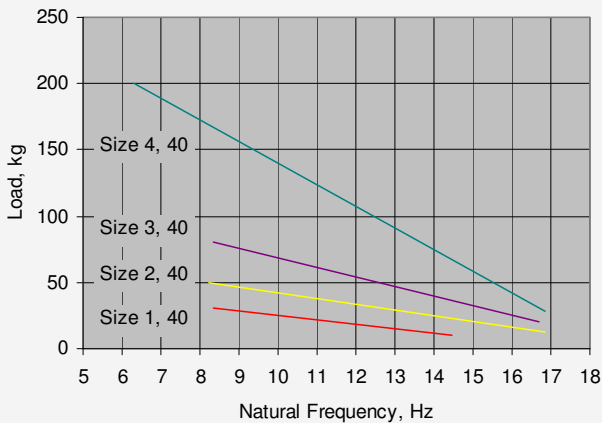
A Division of
CAPARO
ENGINEERING
Limited



Machine Mount Series

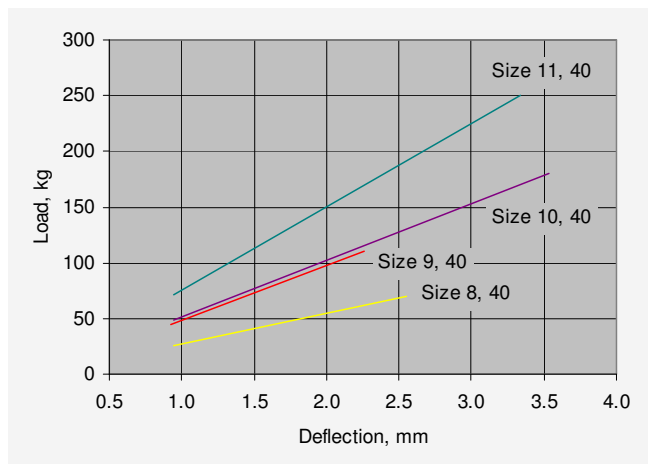
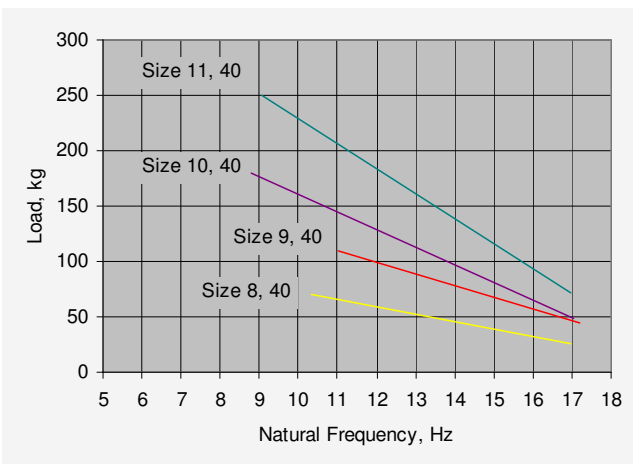
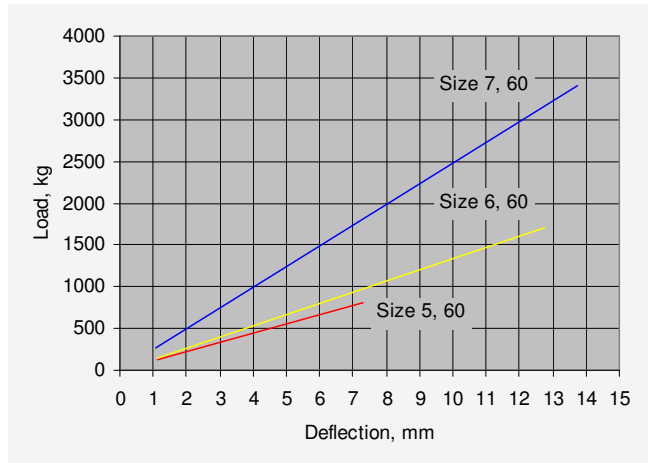
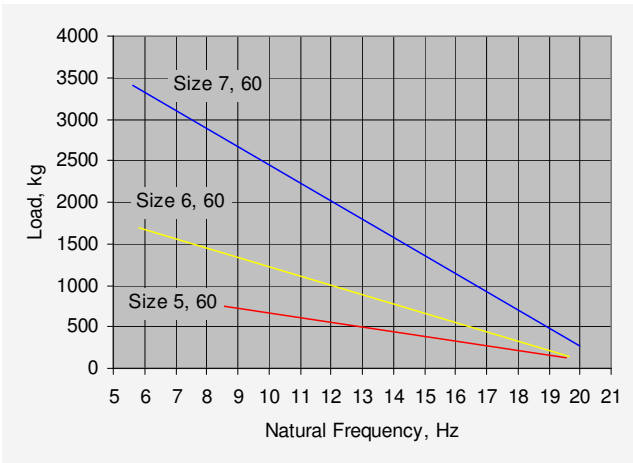
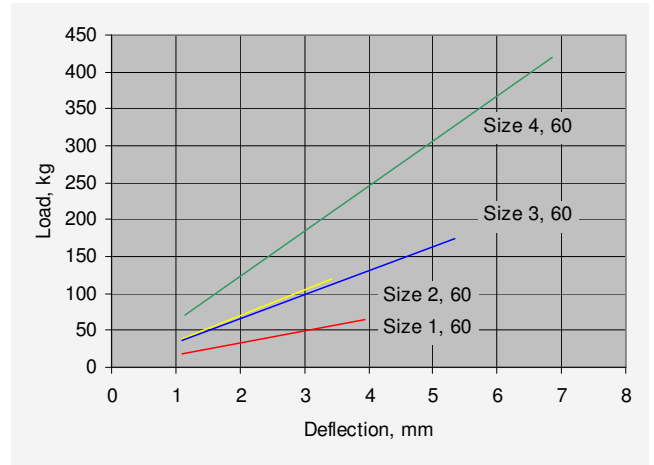
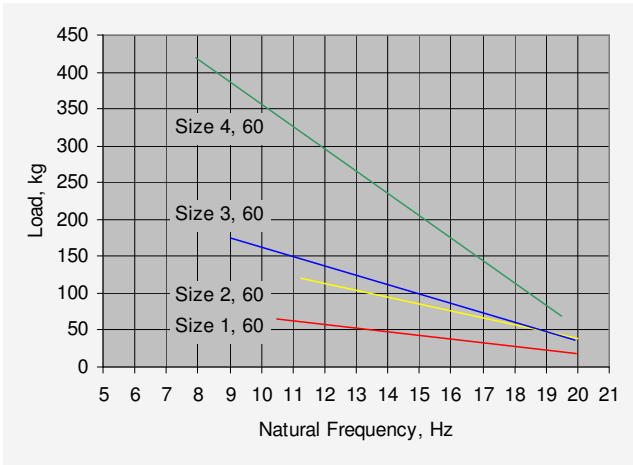
Size No.	Rubber Hardness	Part No.	Supported Mass Range
	Shore		kg
1	40	15/551	10 - 30
	60	15/552	18 - 65
2	40	15/554	12 - 50
	60	15/556	38 - 120
3	40	15/558	20 - 80
	60	15/560	36 - 175
3A	40	15/562	20 - 80
	60	15/564	36 - 175
4	40	15/566	28 - 200
	60	15/568	36 - 420
4A	40	15/570	28 - 200
	60	15/572	36 - 420
5	40	15/574	50 - 450
	60	15/576	125 - 800
5SQ	40	15/593	50 - 450
	60	15/595	125 - 800
6	40	15/578	57 - 875
	60	15/580	150 - 1700
7	40	15/582	110 - 1600
	60	15/583	270 - 3400
8	40	15/641	26 - 70
	60	15/643	77 - 180

Size No.	Rubber Hardness	Part No.	Supported Mass Range
	Shore		kg
9	40	15/645	45 - 110
	60	15/647	129 - 231
9A	40	15/649	45 - 110
	60	15/651	129 - 231
10	40	15/653	48 - 180
	60	15/655	100 - 270
10A	40	15/657	48 - 180
	60	15/659	100 - 270
11	40	15/661	71 - 250
	60	15/663	192 - 450
11A	40	15/665	71 - 250
	60	15/667	192 - 450
12	40	15/669	85 - 450
	60	15/671	213 - 690
13	40	15/673	87 - 750
	60	15/675	205 - 1300
13SQ	40	15/677	87 - 750
	60	15/679	205 - 1300
14	40	15/681	116 - 900
	60	15/683	253 - 1600
15	40	15/685	175 - 1300
	60	15/687	425 - 2100
16	40	15/689	225 - 1400
	60	15/691	450 - 2800



Due to a policy of continuous development and improvement, product specifications can alter without notice.

Machine Mount Series



Due to a policy of continuous development and improvement, product specifications can alter without notice.

Machine Mount Series

