

# Type 'R'



## APPLICATIONS

The type 'R' mount is an anti-vibration mount.

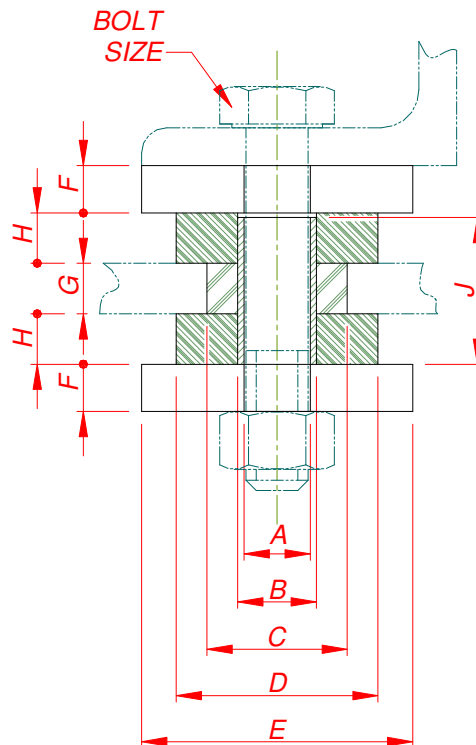
The preferred mounting arrangement is with the bolt centre line vertical, as shown below. However, in cases where the centre of gravity overhang would be small, the mount can be oriented in any direction.

When assembled with an appropriate linking cage, the 'R' mount is known as an 'S' mount (sizes 2, 4, 6 only).

## DESCRIPTION

The mounting consists of metal zinc plated parts and rubber to NES 2029.

Exposed rubber is protected with special flexible red paint to MOD Specification NPL 100.



Caparo Dynamics Part No.	NATO Stock Number	Mount Size No.	Nominal Load	Dimensions									
				kg	A	B	C	D	E	F	G	H	J
15/401	5340-99-961-2289 5340-99-734-9847	1	5	13	17	24	32	42	10	16	10	34,5	M12
15/402	5340-99-306-2879 5340-99-730-6589	2	10	13	17	27	37	50	10	16	14	42,5	M12
15/403	5340-99-051-7346 5340-99-450-7839	3	18	17	21	30	40	52	13	16	14	42,5	M16
15/404	5340-99-374-7173 5340-99-300-0897	4	27	17	21	35	50	68	13	16	16	46,5	M16
15/405	5340-99-660-7573 5340-99-327-7499	5	36	21	25	44,5	60	80	15	16	16	46,5	M20
15/406	5340-99-783-2099	6	45	21	25	44,5	64	86	15	16	16	46,5	M20