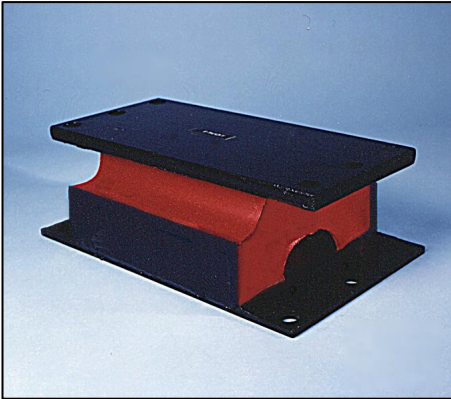


# Type 'PD'



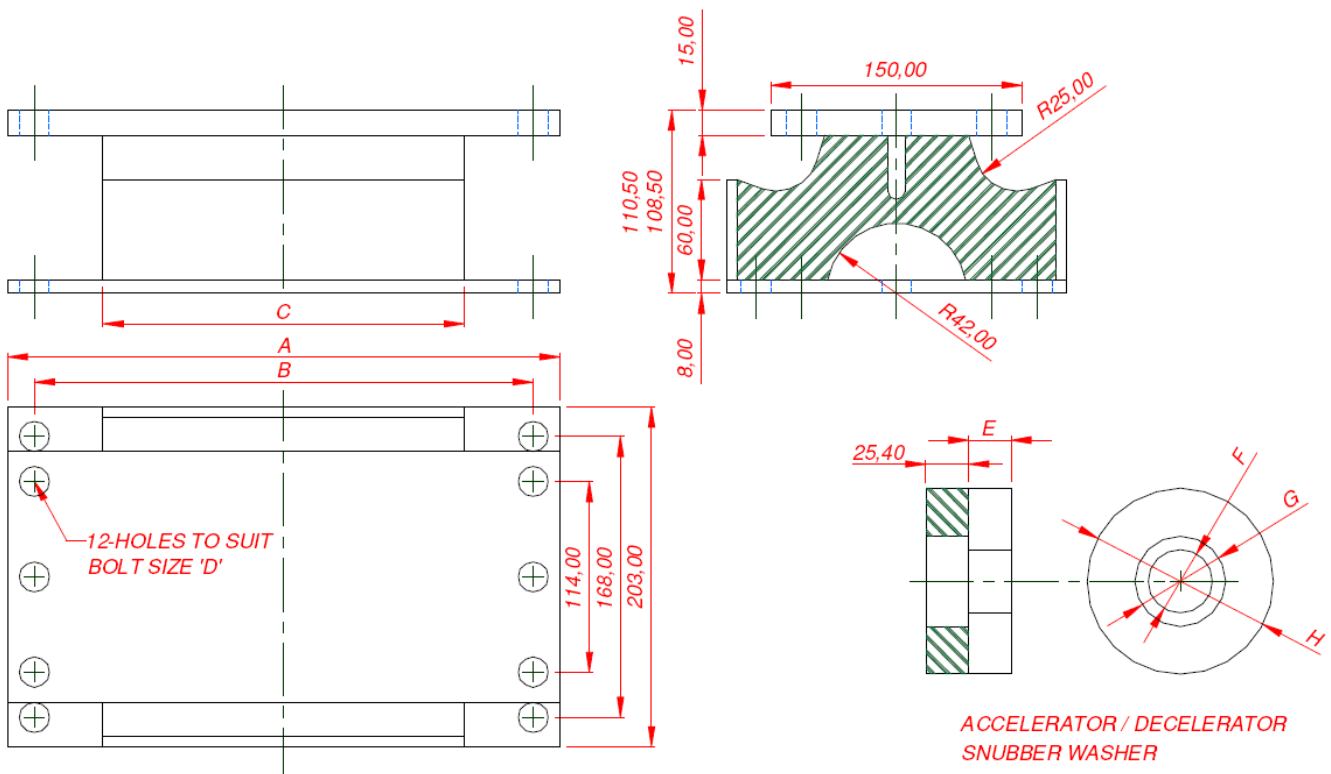
## APPLICATION

The Type 'PD' mount a general purpose resilient mount used primarily for vibration isolation with shock isolation capabilities. The snubber washers are used in pairs to provide captivity in shock environments.

## DESCRIPTION

The mounting consists of mild steel plate bonded to natural rubber to MOD Standard 02-82.

The exposed rubber is protected by red paint to MOD Specification. The steel plates for the mounting are painted in low sheen black.



Caparo Dynamics Part No.	NATO Stock Number	Mount Size	Component	Supported Mass	Dimensions								
					A	B	C	D	E	F	G	H	
				kg									
15/201	5340-99-537-5052	P5D	Mount	750-1100	210	178	127	M12					
15/202	5340-99-537-5053		Accelerator or Decelerator						16	26	48	86	
15/203	5340-99-537-5054	P7D	Mount	1160-1700	267	235	184	M12					
15/204	5340-99-537-5055		Accelerator or Decelerator						19	32	51	98	
15/205	5340-99-769-7909	P8 <sup>1</sup> / <sub>4</sub> D	Mount	1700-2500	330	298	216	M16					
15/206	5340-99-537-5057		Accelerator or Decelerator						25.4	38	54	111	