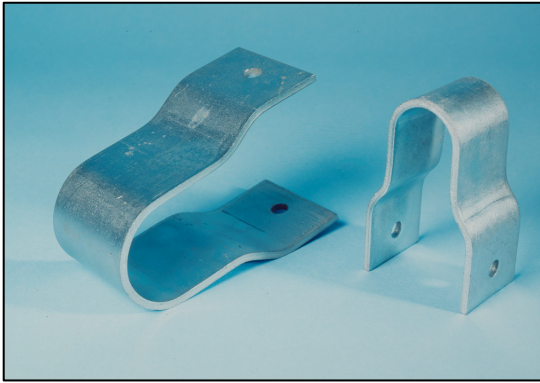


Type 'J'



APPLICATIONS

Suitable for shock mounting applications, where alignment with either equipment or ships structure need not be maintained after shock, and where vibration protection or isolation is not a requirement.

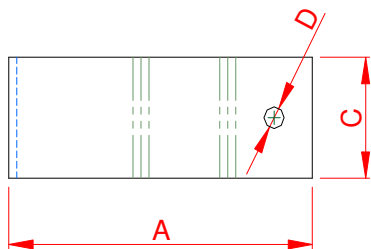
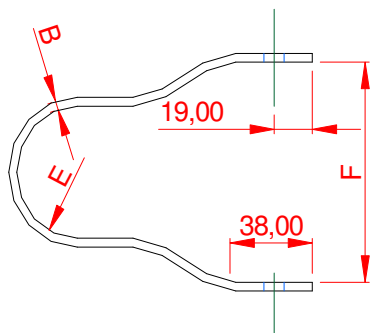
The mounted item may be displaced from its original position by plastic yielding of the mounts as a result of shock. But it may be possible to regain shock protection, as an emergency measure, by forcing the mounts back into their original shape.

The J Mount is commonly employed for the shock protection of robust electrical distribution equipment, including switch and control gear.

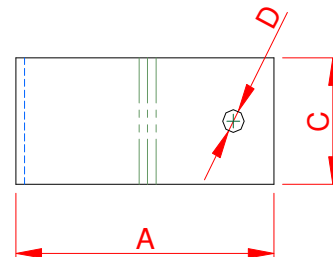
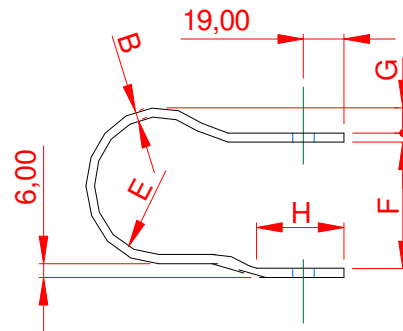
DESCRIPTION

The J Mount is a curved metal strap designed to yield at a predetermined load in any direction under shock.

The mount is self-contained, needing no separate or additional associated devices (i.e. decelerators). It is cost effective and requires little maintenance because its zinc plated surface protects it against corrosion. The J mount is an effective shock mount, with only minor shortcomings in deflection capabilities.



*'A' Range
Deck Range*



Bulkhead Range

Type 'J'

J Mount 'A' range (metric)

Caparo Dynamics Part No.	NATO Stock Number	Mount Size No.	Mass Range	Dimensions					
				A	B	C	D	E	F
			kg						
17/001	5340-99-539-6795	03A	2 - 5	151	2	55	M8	30	95
17/002	5340-99-539-6794	02A	5 - 10	152	3	55	M8	30	95
17/003	5340-99-539-6793	01A	10 - 20	153	4	55	M10	30	95
17/004	5340-99-533-2588	1A	20 - 35	154	5	70	M10	30	95
17/005	5340-99-533-2589	2A	35 - 45	154	5	90	M10	30	95
17/006	5340-99-533-2590	3A	45 - 60	155	6	85	M12	30	95
17/007	5340-99-533-2591	4A	60 - 80	155	6	105	M12	30	95
17/008	5340-99-533-2592	5A	80 - 115	157	8	95	M16	30	95
17/009	5340-99-533-2593	6A	115 - 180	159	10	85	M20	30	95

J mount - bulkhead (metric)

Caparo Dynamics Part No.	NATO Stock Number	Mount Size No.	Mass Range	Dimensions							
				A	B	C	D	E	F	G	H
			kg								
17/016	5340-99-533-2576	1	2 - 5	69	2	55	M10	19	38	6	25
17/017	5340-99-533-2577	2	5 - 10	69	3	55	M10	19	38	6	25
17/018	5340-99-533-2578	3	10 - 20	76	4	55	M12	21	40	8	25
17/019	5340-99-533-2579	4	20 - 35	105	6	70	M16	29	49	15	32
17/020	5340-99-533-2580	5	35 - 70	125	8	90	M20	35	67	9	44
17/021	5340-99-533-2581	6	70 - 135	159	12	85	M24	44	83	11	57

Caparo Dynamics are also able to supply a variety of other Type 'J' mounts which are generally considered obsolete e.g. imperial versions.

Further information is available from Caparo Dynamics upon request.