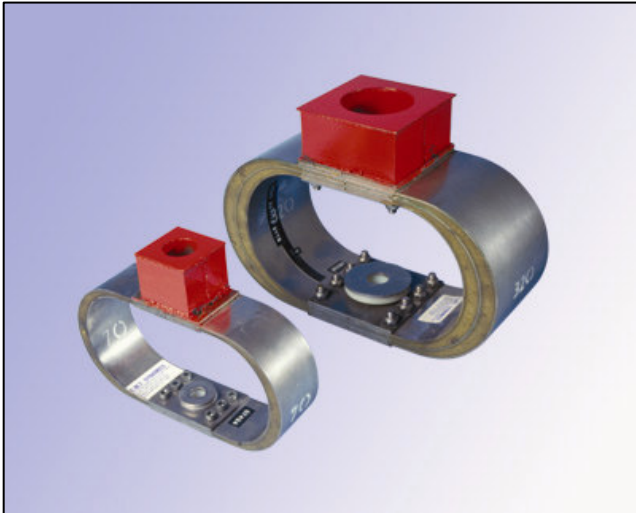


Type 'Y' & 'NSLS'



DESCRIPTION

The mount is a modified version of the Type 'X' mount, developed by the Ministry of Defence to provide improved noise attenuation at higher frequencies.

The essential improvement in noise attenuation is provided by precisely compounded rubber mouldings, forming the 'accelerator' and 'decelerator' units. These units act as a high frequency isolator providing increased noise isolation performance over the 'X' mount.

There are eight sizes of 'Y' mount giving a load range of between 9 and 500 kg. These sizes are divided into three sub-groups based on their dimensions, with groups one and two being 51 mm (2") wide and group three being 102 mm (4") wide: 10 and 20; 45 70 110; 180 320 450.

The 'NSLS' (Non-standard leaf spring) mounts are a variation of the 'Y' mount which are mounted in tension instead of compression. The 'NSLS' are often used in combination with the Type 'Y' where equipment requires mounting in two planes.

APPLICATION

The Type 'Y' mount produces similar shock protection as the Type 'X' mount and has the advantage of superior noise and vibration isolation. The Type 'Y' mount gives better combined shock and vibration isolation than any other resilient mount approved for use by the MoD for Naval applications.

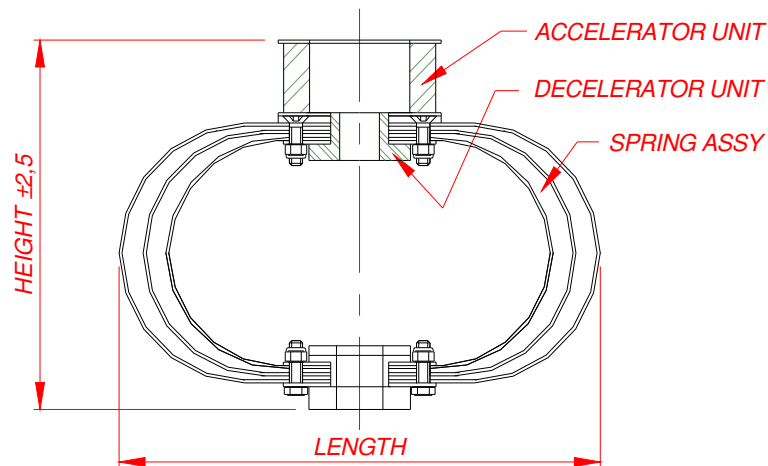
INSTALLATION

The Type 'Y' mount must always be installed in its vertical compression mode, while the 'NSLS' mounts are always installed in vertical tension.

The 'Y' and 'NSLS' mount uses a simple single bolt fixing method on each side of the mount which facilitates the installation of the equipment on board ship.

A 'fixing kit' is required to install a 'Y' mount, which are available in two types (1 and 2). The choice of fixing kit is defined by the method of bolting at the top of the mount. The two installations are illustrated overleaf. The Type 'Y' mount can be ordered without a fixing kit (basic range), or can be ordered completed with either fixing kit. The 'NSLS' mounts are supplied with a specially designed fixing kit.

Type 'Y' & 'NSLS'

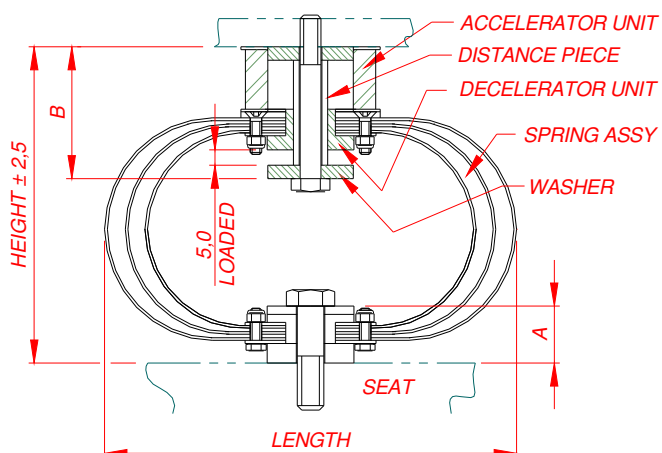


Basic Range – Type 'Y' mount only

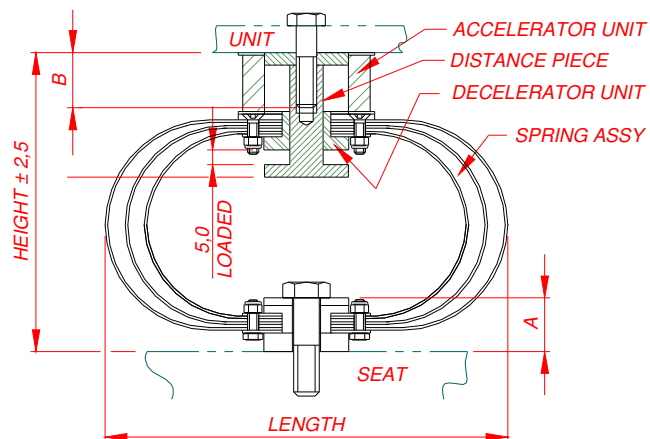
Caparo Dynamics Part No.	NATO Stock Number	Rating	Supported Mass Range	Dimensions						Approx. Weight
				Height Loaded	Height Unloaded	Length	Width	Bolt, top	Bolt, base	
		kg	kg							kg
14/920U	5340-99-778-9769	10	9 - 18	124	134	203	51	M6	M8	0.95
14/921U	5340-99-778-9770	20	18 - 25	124	134	203	51	M6	M8	1.22
14/922U	5340-99-778-9771	45	35 - 55	151	166	216	51	M10	M12	1.44
14/923U	5340-99-778-9772	70	55 - 75	151	166	216	51	M10	M12	1.55
14/924U	5340-99-778-9773	110	90 - 125	151	166	216	51	M10	M12	1.72
14/925U	5340-99-778-9774	180	135 - 250	219	228	297	102	M16	M20	8.39
14/926U	5340-99-778-9775	320	250 - 385	214	228	297	102	M16	M20	8.97
14/927U	5340-99-778-9776	450	380 - 500	214	228	297	102	M16	M20	9.89

Caparo Dynamics Part No.	NATO Stock Number	Type No.	For use with Y Mount:
14/990	5340-99-861-9603	1	10, 20
14/994	5340-99-131-1422	2	10, 20
14/991	5340-99-702-0730	1	45
14/995	5340-99-551-2649	2	45
14/992	Not Allocated	1	70, 110
14/996	Not Allocated	2	70, 110
14/993	5340-99-968-1694	1	180, 320, 450
14/997	5340-99-968-1695	2	180, 320, 450

Type 'Y' & 'NSLS'



'Y' Mount installed using Type 1 fixing kit



'Y' Mount installed using Type 2 fixing kit

'Y' Mounts complete with Type 1 Fixing Kit

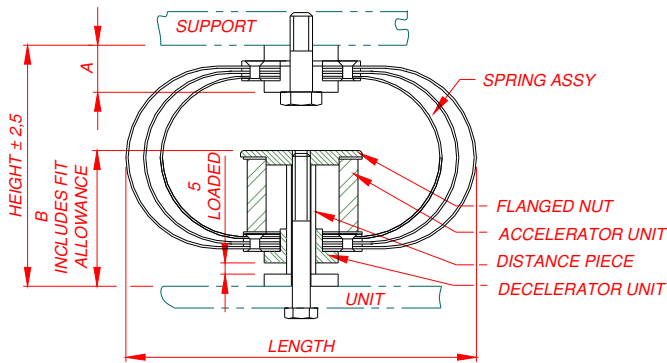
Caparo Dynamics Part No.	NATO Stock Number	Rating	Supported Mass Range	Dimensions							
				Height Loaded	Height Unloaded	Length	Width	Bolt, top	Bolt, base	A	B
14/950U	Not Allocated	10	9 - 18	124	134	203	51	M6	M8	21 / 22.5	51
14/951U	Not Allocated	20	18 - 25	124	134	203	51	M6	M8	21 / 22.5	52
14/952U	Not Allocated	45	35 - 55	151	166	216	51	M10	M12	25 / 23.5	71
14/953U	5340-99-735-0650	70	55 - 75	151	166	216	51	M10	M12	24.5 / 26	71
14/954U	5340-99-763-8176	110	90 - 125	151	166	216	51	M10	M12	25.5 / 27	71
14/955U	5340-99-961-2238	180	135 - 250	219	228	297	102	M16	M20	38.5 / 40	97
14/956U	Not Allocated	320	250 - 385	214	228	297	102	M16	M20	40.5 / 42	97
14/957U	Not Allocated	450	380 - 500	214	228	297	102	M16	M20	42.5 / 44	97

'Y' Mounts complete with Type 2 Fixing Kit

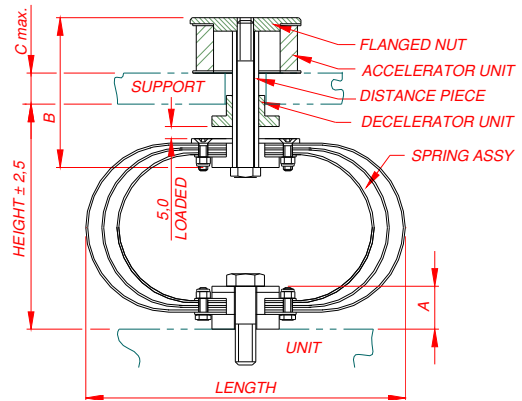
Caparo Dynamics Part No.	NATO Stock Number	Rating	Supported Mass Range	Dimensions							
				Height Loaded	Height Unloaded	Length	Width	Bolt, top	Bolt, base	A	B
14/960U	5340-99-145-1704	10	9 - 18	124	134	203	51	M6	M8	21 / 22.5	28
14/961U	5340-99-320-4485	20	18 - 25	124	134	203	51	M6	M8	21 / 22.5	28
14/962U	5340-99-762-5586	45	35 - 55	151	166	216	51	M10	M12	25 / 23.5	38
14/963U	5340-99-600-4347 5340-99-967-7702	70	55 - 75	151	166	216	51	M10	M12	24.5 / 26	38
14/964U	5340-99-477-5217 5340-99-700-7155	110	90 - 125	151	166	216	51	M10	M12	25.5 / 27	38
14/965U	5340-99-142-6252	180	135 - 250	219	228	297	102	M16	M20	38.5 / 40	48
14/966U	5340-99-720-4876 5340-99-874-3026	320	250 - 385	214	228	297	102	M16	M20	40.5 / 42	48
14/967U	5340-99-428-2122 5340-99-786-4199	450	380 - 500	214	228	297	102	M16	M20	42.5 / 44	48



Type 'Y' & 'NSLS'



Installation of 'NSLS' Mount Type 1



Installation of 'NSLS' Mount Type 2

'NSLS' Type 1 Mounts

Caparo Dynamics Part No.	NATO Stock Number	Rating	Supported Mass Range	Dimensions								
				Height Loaded	Height Unloaded	Length	Width	Top Bolt	Bottom Bolt	A	B	
		kg	kg									
14/970	5340-99-051-2393	10	9 - 18	130	120	203	51	M8	M8	21 / 22.5	59	
14/971	Not Allocated	20	18 - 25	130	120	203	51	M8	M8	22 / 23.5	59	
14/972	5340-99-010-4255	45	35 - 55	155	140	216	51	M12	M10	23.5 / 25	76	
14/973	5340-99-629-9763 5340-99-977-5098	70	55 - 75	155	140	216	51	M12	M10	24.5 / 26	76	
14/974	5340-99-127-4444 5340-99-967-6309 5340-99-337-0854	110	90 - 125	155	140	216	51	M12	M10	25.5 / 27	76	
14/975	5340-99-253-1817	180	135 - 250	214.5	205	297	102	M20	M16	38.5 / 40	106.5	
14/976	Not Allocated	320	250 - 385	219.5	205	297	102	M20	M16	40.5 / 42	106.5	
14/977	5340-99-325-2108	450	380 - 500	220	205	297	102	M20	M16	42.5 / 44	106.5	

'NSLS' Type 2 Mounts

Caparo Dynamics Part No.	NATO Stock Number	Rating	Supported Mass Range	Dimensions								
				Height Loaded	Height Unloaded	Length	Width	Top Bolt	Bottom Bolt	A	B	C
		kg	kg									
14/982	Not Allocated	45	35 - 55	151	166	216	51	M10	M12	23.5 / 25	91	15
14/983	5340-99-168-5771	70	55 - 75	151	166	216	51	M10	M12	24.5 / 26	92	15
14/984	Not Allocated	110	90 - 125	151	166	216	51	M10	M12	25.5 / 27	93	15
14/985	5340-99-147-2458	180	135 - 250	219	228	297	102	M16	M20	38.5 / 40	133	20
14/986	Not Allocated	320	250 - 385	219	228	297	102	M16	M20	38.5 / 40	133	20
14/987	Not Allocated	450	380 - 500	219	228	297	102	M16	M20	38.5 / 40	133	20