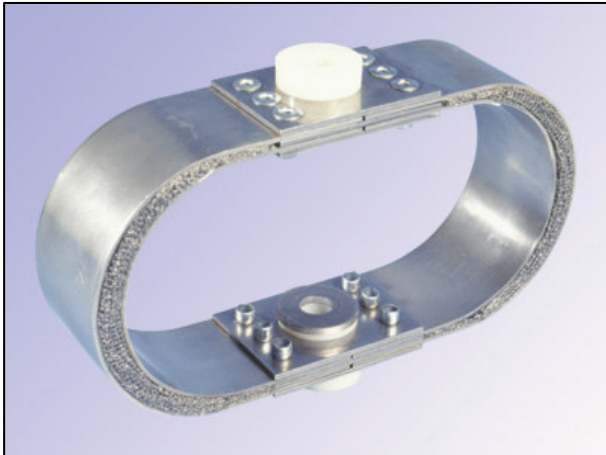


Type 'XM'



DESCRIPTION

The Type 'XM' mount employs two or more leaf springs used in opposing pairs to form an elliptical leaf spring assembly. The spaces between the leaves are filled knitted mesh cushions to provide damping. This allows the mount to be used in areas where high or low temperatures are a concern, and the standard Type 'X' is not suitable.

There are eight sizes of 'XM' mount giving a load range of between 9 and 550 kg. These sizes are divided into three sub-groups based on their dimensions, with groups one and two being 51 mm (2") wide and group three being 102 mm (4") wide: 10 and 20; 45 70 110; 180 320 450.

Caparo Engineering Limited holds the Patent for this design of mount.
Patent Number: GB2330642

APPLICATION

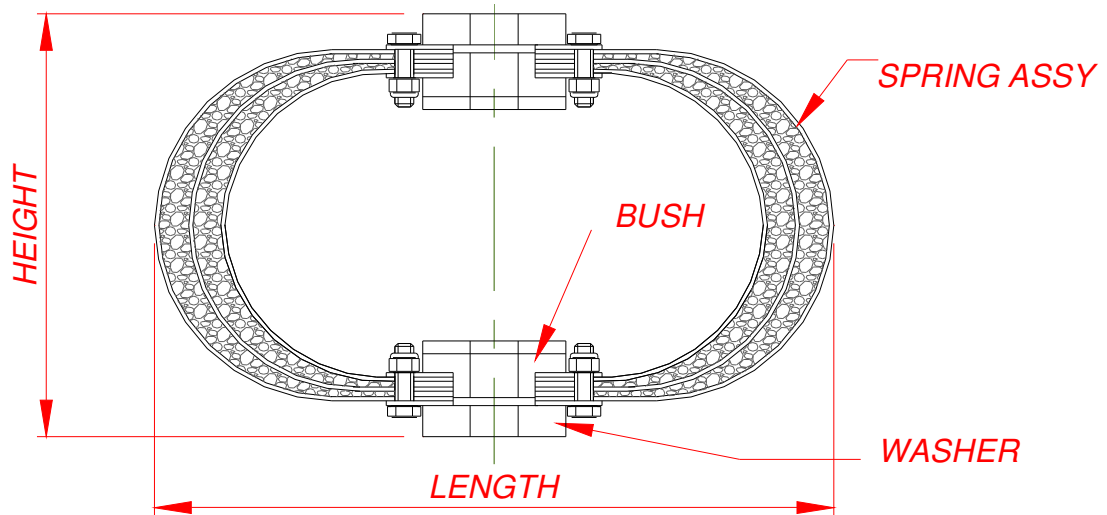
The 'XM' mount is designed to be interchangeable with the Type 'X' providing the same a space efficient shock mount design.

INSTALLATION

The Type 'XM' mount can be installed in any orientation allowing equipment to be mounted to the deck, bulkhead, or deck head. Combinations can also be used where equipment geometry requires it e.g. equipment mounted to the deck and to the bulkhead.

The 'XM' mount uses a simple single bolt fixing method on each side of the mount which facilitates the installation of the equipment on board ship.

Type 'XM'



Caparo Dynamics Part No.	NATO Stock Number	Rating	Supported Mass Range	Dimensions					Approx. Weight
				Height Loaded	Height Unloaded	Length	Width	Bolt	
		kg	kg						kg
14/900MESH	Not Allocated	10	9 - 18	107	114	203	51	M8	0.68
14/901MESH	Not Allocated	20	18 - 35	106	114	203	51	M8	0.8
14/902MESH	Not Allocated	45	35 - 55	124	133	216	51	M12	1.02
14/903MESH	Not Allocated	70	55 - 90	124	133	216	51	M12	1.13
14/904MESH	Not Allocated	110	90 - 135	122	133	216	51	M12	1.25
14/905MESH	Not Allocated	180	135 - 250	185	190	297	102	M20	5.9
14/906MESH	Not Allocated	320	250 - 380	186	190	297	102	M20	6.58
14/907MESH	Not Allocated	450	380 - 550	184	190	297	102	M20	7.26